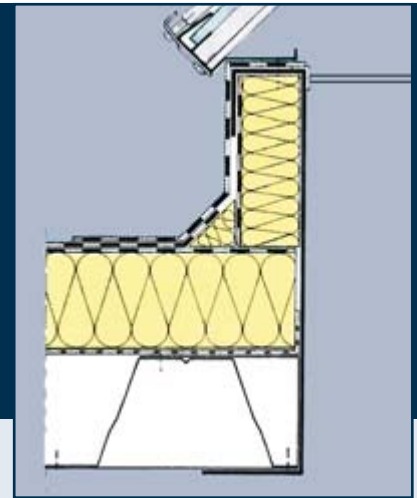


## ESSMANN® Saddle Arcade Rooflight Type 940/20 with 30° slope Type 940/21 with 45° slope



## Product Description

ESSMANN® Saddle Arcade Rooflight, Types 940/20 and 940/21



ESSMANN saddle arcade rooflights offer an architecturally attractive solution for continuous roof lighting in industrial, business and commercial settings. They are normally designed with a slope of 30° or 45°. The saddle arcade rooflights are available in any width – in full centimetres - between 1.00 and 5.00 m span width, as required, and in any length.

The bearing structure is made of extruded aluminium sections placed evenly apart (normally 1060 mm). The base and span sections are also made of aluminium. All of the external small parts – screws and hinges – are made of stainless steel.

The design of the polycarbonate double glazing complies with European fire protection regulations. Special types of glazing, for

example for heat, sun or noise protection, are also available on request.

Ventilation or heat and smoke extraction flaps are integrated for daily aeration and ventilation and for fire prevention purposes. The flap systems are manufactured from grey plastic and are free of thermal bridges. The DIN SHE function works on the principle of a double flap system; the flaps open 90° at the ridge and can be fitted with additional ventilation motors (standard lift 300 mm) on request.

The ventilation flap system is installed as a single flap and opens in the eaves point. Any colour on the RAL scale can be selected for the aluminium sections and flap systems.

*Example: Frame structure consisting of multiple-edged, galvanised sheet steel as cantilever frame suitable for upright installation.*



*Ventilation flap with ESSMANN servomotor opener for additional aeration and ventilation.*



*SHE flap, smoke and heat extraction system version. Alternatively with servomotor opener for additional aeration and ventilation.*

Further information can be found at [www.essmann.de](http://www.essmann.de)

ESSMANN GmbH  
Im Weingarten 2  
D-32107 Bad Salzufflen  
Telephone +49 (0) 5222.791-0  
Telefax +49 (0) 5222.791-236  
E-Mail [info@essmann.de](mailto:info@essmann.de)  
[www.essmann.de](http://www.essmann.de)

A member of the **ESSMANN GROUP**.