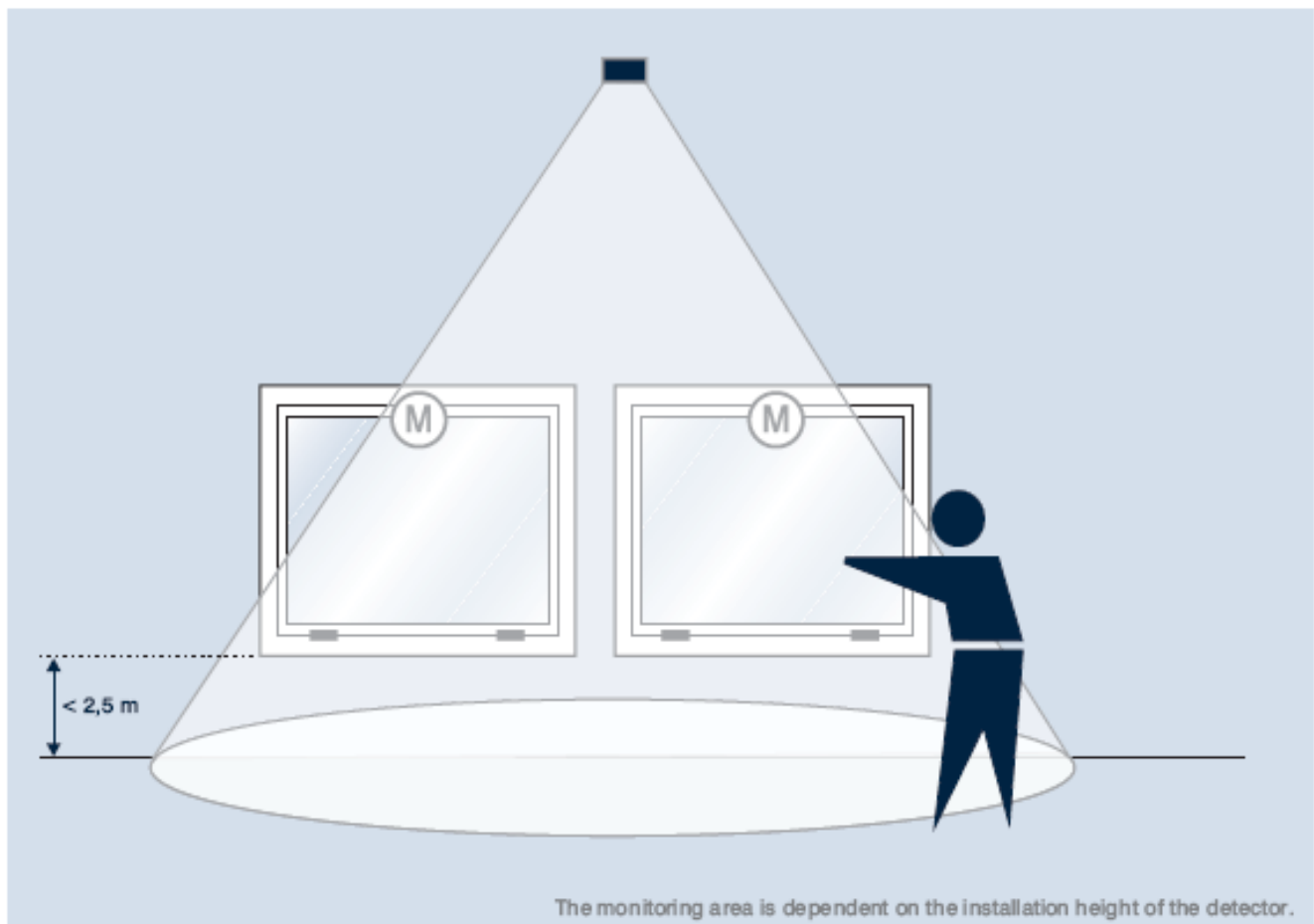


WPS[®]

Window Protection System

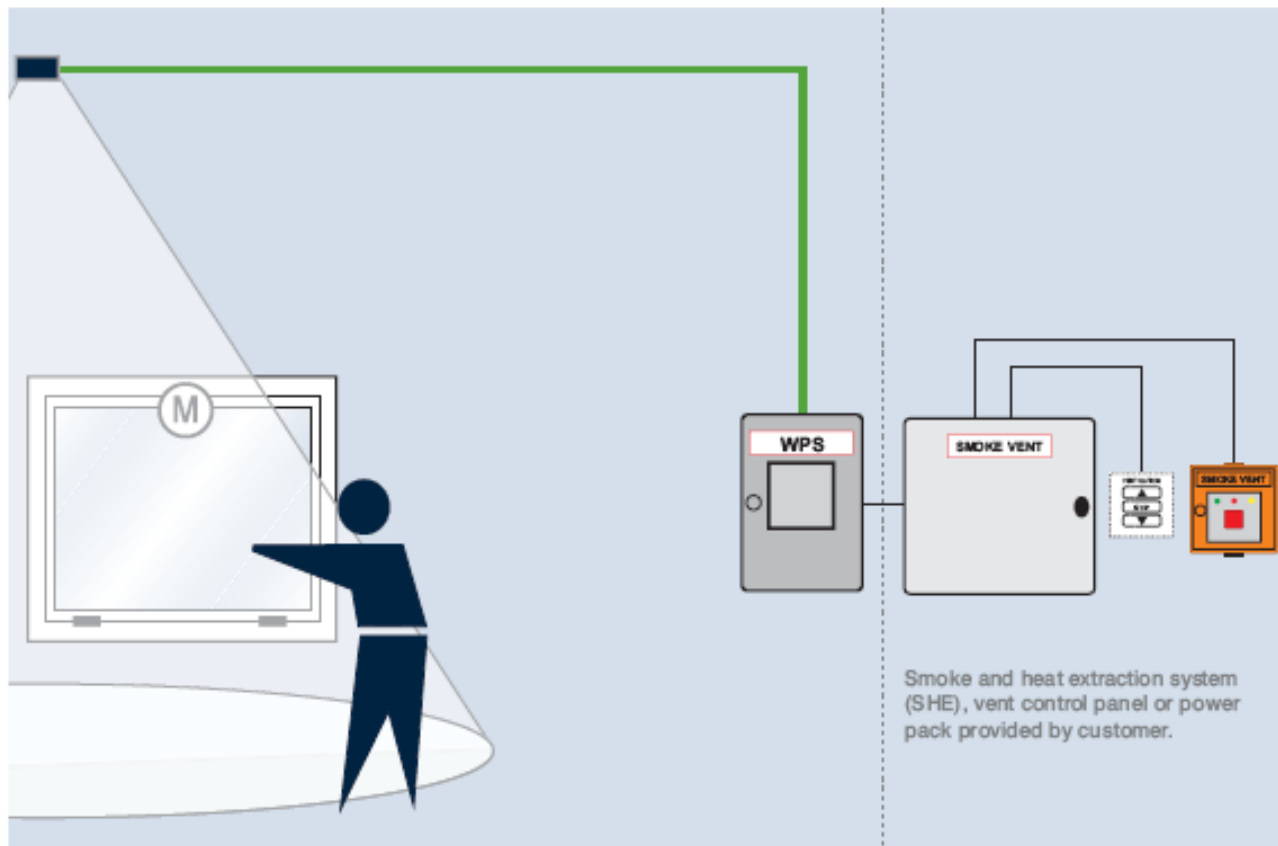
Innovative non-contacting trapping protection for power-operated windows



- ✓ satisfies the highest class of protection requirements (class 4: E2/N3/S2)
- ✓ independent of drive and controller manufacturers
- ✓ extensive monitoring area
- ✓ individually adjustable, can be cascaded as required
- ✓ rapid reaction time
- ✓ main and subsidiary closing edges are monitored, as is the drive
- ✓ suitable for all types of windows
- ✓ compact controller

WPS®

Innovative non-contacting trapping protection for power-operated windows



WPS represents intrusion protection for automatically operated ("power-operated") windows. A special sensor "detects" the risk of a person being trapped well in advance. Thereupon the window's closing sequence is promptly halted. In this manner WPS fulfils the highest level of all safety requirements for power-operated windows. WPS comes into play without actual bodily contact: By means of a special sensor not only are the immediate trapping locations monitored, but also the hazard zones in the whole area surrounding the window. This means that WPS can react in anticipation of events. Not only the main and subsidiary closing edges, but also several adjacent windows can be monitored at the same time. WPS is suitable for all types of windows. In contrast to the installation of contact strips, no time-consuming structural tasks are required it is just sensors and receivers that have to be fitted. WPS can be retrofitted without difficulty, and independently of the drive and controller manufacturers. WPS fulfils the highest safety criteria (protection class 4). In the case of low windows (installation height or casement lower edge less than 2.5 metres) to which access is easily gained (risk level E2) the system provides the greatest possible protection. WPS is also to be recommended for "sensitive" areas of use of risk level N3, for example, children's nurseries or schools, so that windows do not become hazardous locations!